

# COGNEX



**MOBILE SOLUTIONS**  
DO MORE WITH YOUR MOBILE DEVICE

# THE GLOBAL LEADER

## IN MACHINE VISION AND INDUSTRIAL BARCODE READING

**Cognex®, the world's most trusted machine vision and industrial barcode reading company.**

With over 1.5 million systems installed in facilities around the world and over thirty-five years of experience, Cognex is solely focused on industrial machine vision and image-based barcode reading technology. Deployed by the world's top manufacturers, suppliers, and machine builders, Cognex products ensure that manufactured items meet the stringent quality requirements of each industry.

Cognex vision-enabled mobile solutions allow you to leverage mobile device technology for your 1-D, 2-D, and direct part mark (DPM) barcode reading applications in-house or in the field. With the widest range of solutions and largest network of vision experts to meet the most challenging applications, Cognex is the best choice to help you **Build Your Vision.™**

**\$521**  
**MILLION**  
**2016 REVENUE**

**OVER 35**  
**YEARS IN THE BUSINESS**

**500+**  
**CHANNEL PARTNERS**

**GLOBAL OFFICES IN**  
**20+ COUNTRIES**

**1,500,000+**  
**SYSTEMS SHIPPED**



# COGNEX MOBILE SOLUTIONS

## RUGGED. MODULAR. SMART.

Logistics and manufacturing operations rely on barcode reading to track, trace, and sort items to improve workflow processes at every stage. Mobile barcode reading solutions within the same organization often use different platforms on separate devices, resulting in multiple vendors, steep learning curves, and technology that quickly becomes obsolete.

Cognex offers the only end-to-end family of mobile scanning solutions, achieving best-in-class 1-D, 2-D, and direct part mark (DPM) barcode reading performance. Using the Cognex Mobile Barcode Software Development Kit (SDK) as the single application across your entire enterprise, choose from a vision-enabled mobile terminal, mobile barcode reader, or a built-in smartphone or tablet camera to solve your barcode reading challenges.

### INDUSTRIES

Cognex supplies mobile solutions to many industries, including:

- Logistics and Transportation
- Field Service and Utilities
- Couriers and Parcel Delivery
- Airports
- Automotive and Manufacturing
- Food and Beverage
- Consumer Products

**MX-1502 Series**



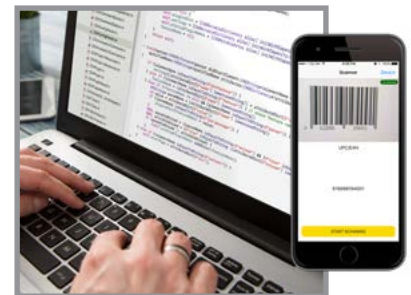
**MX-1000 Series**



**MX-100 Series**



**Cognex Mobile Barcode SDK**



# MX-1502 SERIES MOBILE TERMINAL

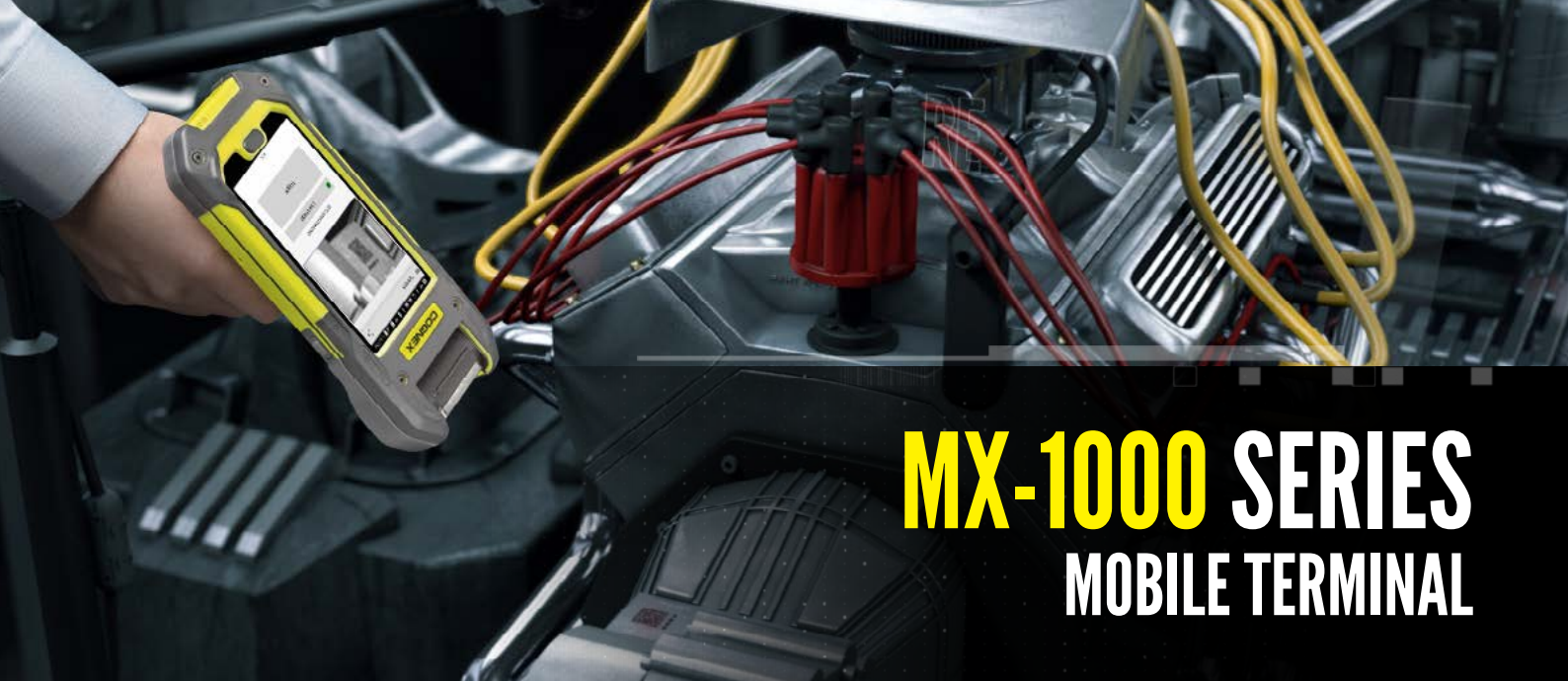
MX-1502 reads codes at standard, long, and extended-ranges, up to 10 meters away.

**Rugged**, IP-65 rated housing is designed to handle the harshest environments withstanding up to 50 drops from 2 meters onto concrete

**Modular**, future-proof design supports a variety of Android® and iOS® smartphones, lighting and optics, and a pistol grip accessory

**Smart** algorithms as well as high-powered optical technology read codes from as near as 15 cm to as far away as 10 m

**Cognex Mobile Barcode SDK** enables seamless integration with customer applications



# MX-1000 SERIES MOBILE TERMINAL

MX-1000 combines fast, image-based barcode reading with your mobile device for standard range 1-D and 2-D code reading applications.

**Rugged**, IP-65 rated housing is designed to handle heavy, industrial use and up to 50 drops from 2 meters onto concrete

**Smart** barcode algorithms reliably read direct part mark (DPM) codes and 1-D and 2-D label-based codes. Rotating scan head adjusts to optimal ergonomic scan angles.

**Modular** design supports a variety of Android and iOS smartphones and accessories



**Cognex Mobile Barcode SDK** enables seamless integration with customer applications

# MX-100 SERIES MOBILE BARCODE READER

MX-100 redefines smartphone barcode scanning performance with innovative aiming and lighting.

**Centered aiming pattern**  
in the field of view for  
intuitive barcode scanning

**Optical communication**  
protocol provides easy  
setup without the need  
for Wi-Fi, Bluetooth, or  
Lighting port configuration

**Cognex Mobile  
Barcode SDK**  
license supports a broad  
range of symbologies

**Diffuse lighting**  
for bright, even  
illumination

**Case slot**  
accommodates  
Otterbox® uniVERSE  
Case System® modules,  
like a device stand or  
credit card reader

```

AlertDialog.Builder devicePickerBuilder = new AlertDialog.Builder(mContext);
devicePickerBuilder.setTitle("Select device");

final ArrayAdapter<String> arrayAdapter = new ArrayAdapter<String>(mContext,
    android.R.layout.simple_list_item_1);
arrayAdapter.add("MX Scanner");
arrayAdapter.add("Mobile Camera");

if (cancelable) {
    devicePickerBuilder.setNegativeButton("Cancel", new DialogInterface.OnClickListener() {
        @Override
        public void onClick(DialogInterface dialog, int which) {
            dialog.dismiss();
            initDevice();
        }
    });
}

devicePickerBuilder.setAdapter(arrayAdapter, new DialogInterface.OnClickListener() {
    @Override
    public void onClick(DialogInterface dialog, int which) {
        ScannerActivity.sharedPreferences.edit().putInt("device", which);
        initDevice();
    }
});
}
}

```

# COGNEX MOBILE BARCODE SOFTWARE DEVELOPMENT KIT (SDK)

The Cognex Mobile Barcode SDK is a comprehensive software tool for all facets of mobile barcode scanning. It enables you to be more efficient by tailoring and maintaining a single application for all mobile devices across your entire organization.

The SDK can be used with any supported device, including:

- Smartphone and tablet cameras
- MX-100 Series mobile barcode readers (license included)
- MX-1000 and MX-1502 Series mobile terminals (license included)



## Tradeshow Tracking



## Inventory Management



## VIN Barcode Scanning



# LOGISTICS & TRANSPORTATION

## MOBILE SOLUTIONS APPLICATIONS

Close-up and extended range scanning capabilities are ideal for reading barcodes on packages, field service equipment, shipping labels, and luggage.

### Extended Range Scanning



### Field Service Maintenance



### Courier Delivery



### Airport Baggage Handling





# MANUFACTURING

## MOBILE SOLUTIONS APPLICATIONS

Cognex mobile solutions provide flexible options for scanning codes in factory settings and reading direct part mark (DPM) codes found on a variety of automotive parts and manufacturing assembly lines.

### DPM Decoding



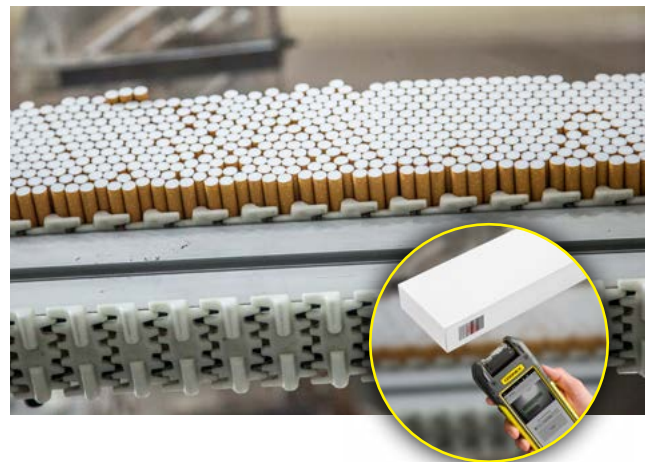
### Heavy Manufacturing



### Food Allergen Management



### Traceability and Compliance



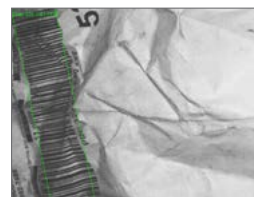
# COGNEX DELIVERS ADVANCED TECHNOLOGY

## Advanced Algorithms and Patented Technologies

Cognex mobile solutions are optimized with patented algorithms.

**1DMax with Hotbars**, the best-in-class 1-D barcode algorithm can handle extreme variations in contrast, blur, damage, resolution, quiet zone violations, and perspective distortion, and can decode up to 10x the speed of a typical image-based reader.

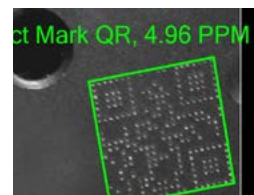
**2DMax with PowerGrid**, a breakthrough in 2-D decoding software, handles degradations to the appearance of 2-D matrix codes, even when vital elements of the code are missing or damaged.



*Warped*



*Poorly marked*



*Small modules*



*Scratched*

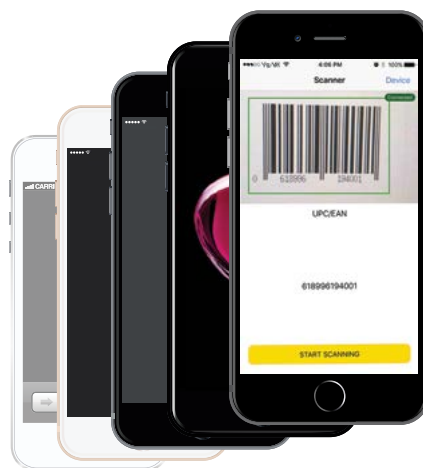
## Supported Devices

Cognex's commitment to innovation helps protect your smartphone and technology investments. The modular design of Cognex mobile products supports a number of existing and future iOS and Android devices, leveraging the latest communication technologies including 3G, 4G, 4G LTE, Wi-Fi, Bluetooth and more.



### Samsung

- Galaxy A3
- Galaxy S4
- Galaxy S5
- Galaxy S6
- Galaxy S7
- Galaxy S8
- Galaxy J3
- Galaxy J5



### Apple

- iPod Touch
- iPhone 5/5s
- iPhone SE
- iPhone 6/6s
- iPhone 7/7 Plus
- iPhone 8/8 Plus

# SUPPORTED SYMBOLOGIES

Cognex mobile solutions support a broad range of barcode symbologies.

## 1-D Codes



## 2-D Codes



## Postal Codes



PLANET, Australian Post, Japan Post, Royal Mail, UPU

# MOBILE SOLUTIONS INDUSTRIES

## Logistics & Transportation



Close-up and extended range barcode reading capabilities are ideal for reading barcodes on products, packages, shipping labels, and high shelves.

## Couriers & Parcel Delivery



Unique modular designs allow employees and contractors to use preferred devices in the field for accurate barcode scanning of packages and parcels.

## Automotive & Heavy Manufacturing



Read direct part mark (DPM) codes found on a variety of automotive parts and manufacturing assembly lines.

## Field Services & Utilities



Easily integrate scanning capabilities with existing mobile phones to read 1-D and 2-D codes on work orders, replacement parts, and equipment.

## Airports



Standard and extended range scanning enables above and below-the-wing solutions for airports, including bag tag reading and tracking.

## Food & Beverage/Consumer Products



Mobile scanning products aid food allergen management, traceability and compliance, inventory tracking, and product quality.

# COGNEX

Companies around the world rely on Cognex vision and barcode reading solutions to optimize quality, drive down costs and control traceability.

Corporate Headquarters One Vision Drive Natick, MA 01760 USA

### Regional Sales Offices

#### Americas

North America +1 844-999-2469  
Brazil +55 (11) 2626 7301  
Mexico +01 800 733 4116

#### Europe

Austria +49 721 958 8052  
Belgium +32 289 370 75  
France +33 1 7654 9318  
Germany +49 721 958 8052

Hungary +36 30 605 5480  
Ireland +44 121 29 65 163  
Italy +39 02 3057 8196  
Netherlands +31 207 941 398  
Poland +48 717 121 086  
Spain +34 93 299 28 14  
Sweden +46 21 14 55 88  
Switzerland +41 445 788 877  
Turkey +90 216 900 1696  
United Kingdom +44 121 29 65 163

#### Asia

China +86 21 6208 1133  
India +9120 4014 7840  
Japan +81 3 5977 5400  
Korea +82 2 539 9980  
Malaysia +6019 916 5532  
Singapore +65 632 55 700  
Taiwan +886 3 578 0060  
Thailand +66 88 7978924

© Copyright 2018, Cognex Corporation.  
All information in this document is subject to change without notice. All Rights Reserved. Cognex is a registered trademark of Cognex Corporation. All other trademarks are property of their respective owners.  
Lit. No. MSPG-01-2018

[www.cognex.com](http://www.cognex.com)